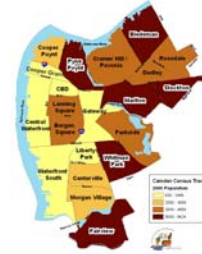


Tracking Camden's Progress

CAMConnect Members Meeting
July 21, 2006



What is CAMConnect?



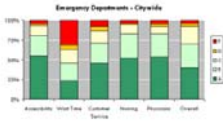
- Mission: to expand and democratize access to data and information for those who live and work in the City of Camden
- 40+ members
- Original reports on topics such as health, municipal finance, and employment
- Neighborhood-level data and reports

July 21, 2006

www.camconnect.org



Services Provided by CAMConnect



- GIS Mapping
- Data collection and analysis
- Evaluation
- Survey design
- Online library of public documents

July 21, 2006

www.camconnect.org



What Makes a Good Indicator?

“A community that does not know itself cannot improve.”

- Baltimore Neighborhood Indicators Alliance

July 21, 2006

www.camconnect.org



What Makes a Good Indicator?

- Measures progress toward a goal
- Compels, interests, and excites
- Focuses on resources and assets
- Focuses on causes, not symptoms
- Makes linkages and relationships
- Relates to the whole community
- Understandable

Source: Baltimore Neighborhood Indicators Alliance

July 21, 2006

www.camconnect.org



Baltimore Neighborhood Indicators Alliance

- Housing and community development
- Child and family health, safety, and well-being
- Workforce and economic development
- Sanitation
- Urban environment and transit
- Education and youth
- Neighborhood action and sense of community

Source:
www.bnai.org

July 21, 2006

www.camconnect.org



Baltimore Neighborhood Indicators Alliance

Example

Vision: Neighborhoods that are home to stable families with the resources necessary needed to nurture children, including access to high-quality health care and jobs that pay family-supporting wages.

Result: Babies born healthy

Indicators: % of births delivered at term
% of babies born with satisfactory birth weight
% of births where mother received 1st trimester care

July 21, 2006

www.camconnect.org



Elements of this presentation

- Health / vital statistics
- Public safety
- Municipal budget and finance
- What's next?

July 21, 2006

www.camconnect.org



Health & Vital Statistics

- Teen birth rate - Number of teens ages 15-19 who gave birth per 1,000 teens
- Percent of births delivered at term
- Percent of babies born with satisfactory birth-weight
- Percent of births where mother received early prenatal care (first trimester)

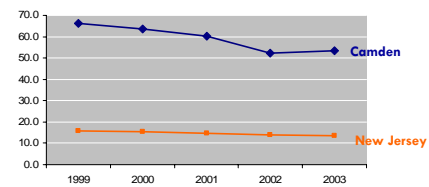
July 21, 2006

www.camconnect.org



Health & Vital Statistics

Number of teens ages 15-19 who gave birth per 1,000 teens



Source: NJ Dept of Health & Senior Services, Center for Health Statistics

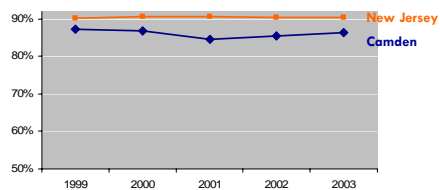
July 21, 2006

www.camconnect.org



Health & Vital Statistics

Percent of births delivered at term (not premature)



Source: NJ Dept of Health & Senior Services, Center for Health Statistics

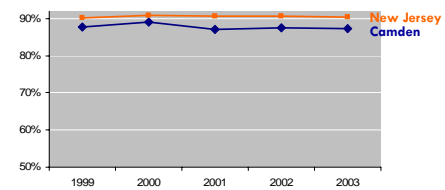
July 21, 2006

www.camconnect.org



Health & Vital Statistics

Percent of babies born with satisfactory birth weight



Source: NJ Dept of Health & Senior Services, Center for Health Statistics

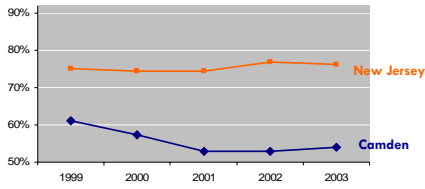
July 21, 2006

www.camconnect.org



Health & Vital Statistics

Percent of births where mother received early prenatal care



Source: NJ Dept of Health & Senior Services, Center for Health Statistics

July 21, 2006

www.camconnect.org



Public Safety

- Juvenile Arrests for Part 1 offenses - Number of juvenile arrests for Part 1 offenses
- Juvenile Arrests for drug-related offenses - Number of juvenile arrests for drug-related offenses
- Violent crime - Number of reported Part I criminal offenses classified as violent

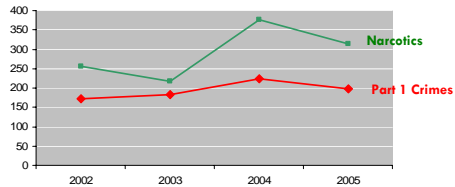
July 21, 2006

www.camconnect.org



Public Safety

Juvenile arrests in Camden



Source: City of Camden Police Department, UCR Division

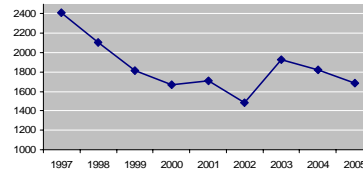
July 21, 2006

www.camconnect.org



Public Safety

Violent crime in Camden



Source: City of Camden Police Department, UCR Division

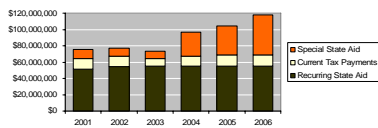
July 21, 2006

www.camconnect.org



Municipal Budget and Finance

Camden Revenues



- Property values
- Spending
- Required special State Aid

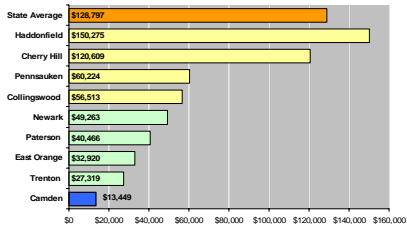
July 21, 2006

www.camconnect.org



Municipal Budget and Finance

Equalized value per capita



Equalized value per capita = property wealth per person if all municipalities assessed property in the same way

Source: NJ Dept of Community Affairs, Division of Local Government Services (2005 data)

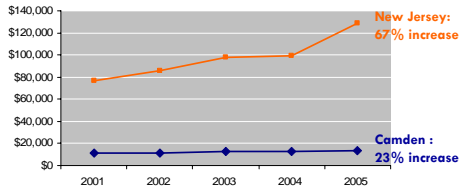
July 21, 2006

www.camconnect.org



Municipal Budget and Finance

Equalized value per capita

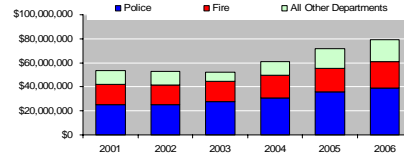


Source: NJ Dept of Community Affairs, Division of Local Government Services
July 21, 2006
www.camconnect.org



Municipal Budget and Finance

City of Camden spending on salaries



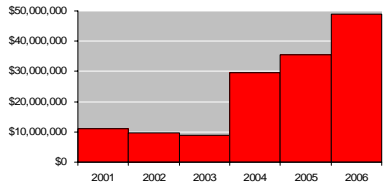
Municipal salaries have increased **46%** since the start of the Recovery. Between FY 2005 and FY 2006, salary expenditures increased \$7.75 million, or 10%.

Source: City of Camden (figures are for fiscal years)
July 21, 2006
www.camconnect.org



Municipal Budget and Finance

Special State Aid to Camden



Source: City of Camden (figures are for fiscal years)
July 21, 2006
www.camconnect.org



Next Steps

- Identify if Camden stakeholders want an indicators project
- Work with City of Camden to build capacity to collect needed information
- Identify potential funding sources
- Produce an updated version of CAMConnect's Camden Facts report this fall
- Determine appropriate indicators for Camden
- Join CAMConnect as a member!**

July 21, 2006
www.camconnect.org



Contact

Derek Ziegler
Executive Director
CAMConnect: Linking Communities with Information
E&R Building, Suite 142
401 Haddon Avenue
Camden, NJ 08103
(856) 968-9506 phone
(856) 757-9779 fax
ziegler@camconnect.org
www.camconnect.org

July 21, 2006
www.camconnect.org

