

CAMConnect News

January 2006



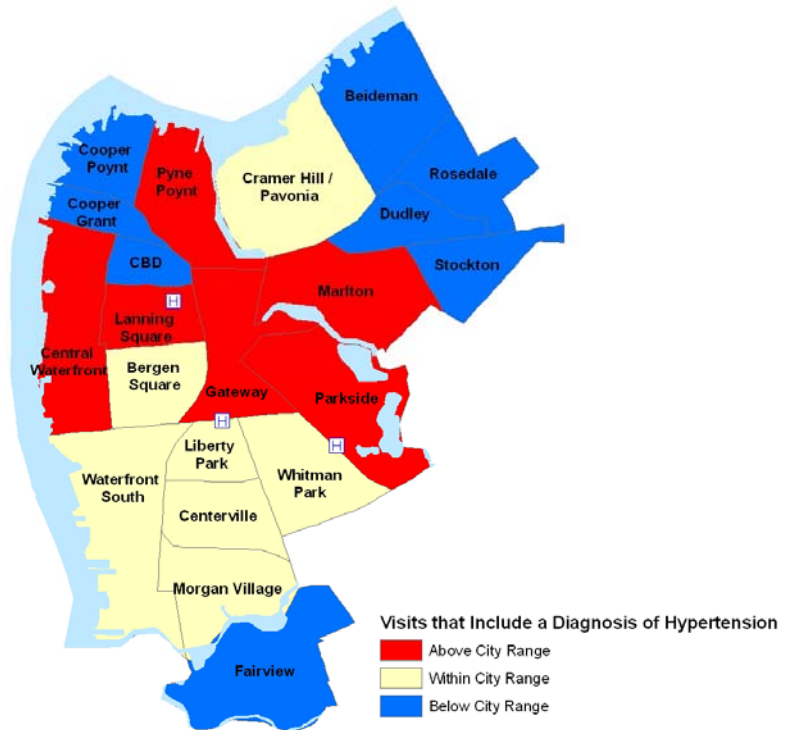
Hospital Discharge Data Holds Great Potential

Thanks to the cooperation of the three Camden hospitals, CAMConnect: Linking Communities with Information is making significant progress toward better understanding health problems of Camden residents. CAMConnect, working with the Camden Coalition of Healthcare Providers, is analyzing emergency room and inpatient hospitalization data to determine patterns in treatment and utilization.

This work is still in the beginning stages, as CAMConnect is developing a database that will allow for sophisticated queries to allow for more in-depth analysis of the data.

According to Dr. Jeff Brenner from Cooper Family Medicine, a principal investigator on the project, "We have a long way to go in our analysis of this complex new dataset. I am incredibly excited by the potential for improving health outcomes in the city through the use of this data."

The work on the hospital discharge dataset complements other health data collection activities. In summer 2005, CAMConnect worked with the Department of Family Medicine at Cooper Health System and the Center for Children & Childhood Studies at Rutgers University to conduct a street intercept survey of 500 Camden residents. This survey, funded by the Institute for Elimination of Health Disparities at UMDNJ, asked for resident perceptions of local health care institutions. CAMConnect also collaborated with Camden Community Partners to conduct a survey in conjunction with Take a Loved One for a Checkup Week.



The map above compares the rates of hospital visits that included a diagnosis of hypertension in 2003. Adjusted for population, it shows how different neighborhoods compare to the citywide rate.

Variables collected in health data analysis

Age	Race
Address	Gender
Diagnosis Code(s)	Insurance Status

With this data, CAMConnect will be able to identify where targeted interventions are possible. For instance, we will be able identify the number of elderly from the Central Waterfront neighborhood who go to the hospital for treatment of asthma.

CAMConnect is seeking applicants for a new Data Manager position. For more details, see page 3.

Data Open House Provides Opportunities for Learning

On December 2, 2005, CAMConnect held its 2nd annual Data Open House at Rutgers-Camden. Over 80 attendees had the opportunity to interact with presentations from 12 organizations.

Keynote presentations at the event were made by CAMConnect Executive Director Derek Ziegler on the geography of health data in the City of Camden and an explanation of the Morgan-Quitno Most Dangerous City rankings.

CAMConnect is planning another Data Open House event, possibly at a different venue, for later in 2006. Visit www.camconnect.org for updates.



Jean Mouch, CAMConnect's Board Chair from 2004-2005, presents data from the Camden County Cancer Coalition at the Data Open House event. For more on the event, www.camconnect.org/newsletter/DataOpenHouse.htm

Sean Brown joins CAMConnect through AmeriCorps VISTA

Working with the Community Planning & Advocacy Council (CPAC) and the Environmental Protection Mid-Atlantic, CAMConnect has been fortunate to land the services of Sean Brown through the AmeriCorps VISTA program. Sean, a Camden resident, is working with CAMConnect on increasing community awareness of the data and information available through CAMConnect. "I love that I am a part of informing people with data that will empower all of us to make Camden the invincible city it has the potential to be," Sean says.

Sean will be working with CAMConnect and the VISTA program through November 2006.

Office Relocation

CAMConnect has relocated its offices within the Education & Research Building at 401 Haddon Avenue in Camden. CAMConnect is now in a prominent location on the first floor of the building (Suite 142). The new space gives the organization additional room for workstations and meeting space.

CAMConnect

E&R Building, 2nd Fl
401 Haddon Avenue
Camden, NJ 08103

Phone: 856-968-9506

Fax: 856-757-9779

E-mail: ziegler@camconnect.org

Website: www.camconnect.org

Mission: The purpose of CAMConnect is to expand and democratize access to information for residents and organizations that live and work in the City of Camden.

CAMConnect is a member of the National Neighborhood Indicators Partnership (www.urban.org/nnip)

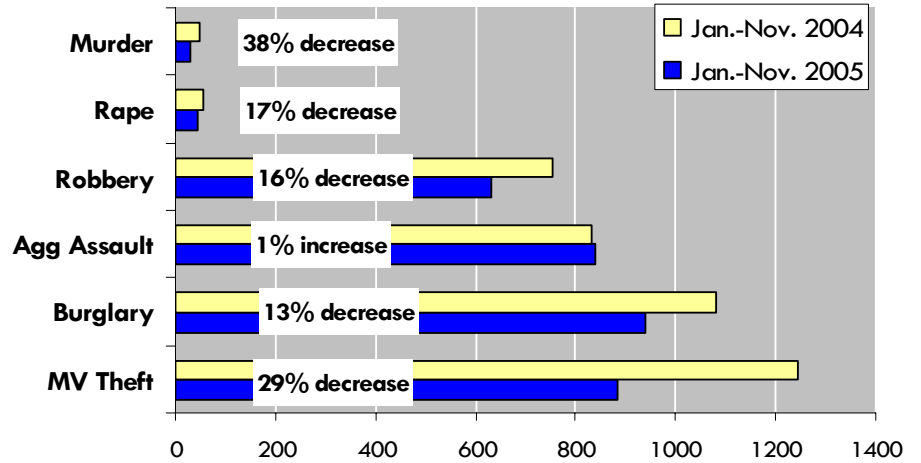
CAMConnect Demystifies Most Dangerous City Rankings

For the 2nd consecutive year, Camden was named the Most Dangerous City in the United States by Morgan-Quitno Press in November 2005. These rankings were based on 2004 crime data.

CAMConnect produced and distributed a handout providing more details about Morgan-Quitno's methodology. This handout showed Camden's crime rates, adjusted for population, for each of the six categories of crime used by Morgan-Quitno to calculate the rankings. CAMConnect was able to predict that Camden would be named Most Dangerous in advance of the actual rankings.

The Philadelphia Inquirer quoted CAMConnect in several articles related to the rankings, and published a commentary piece by CAMConnect.

Number of Crimes Reported to Camden Police



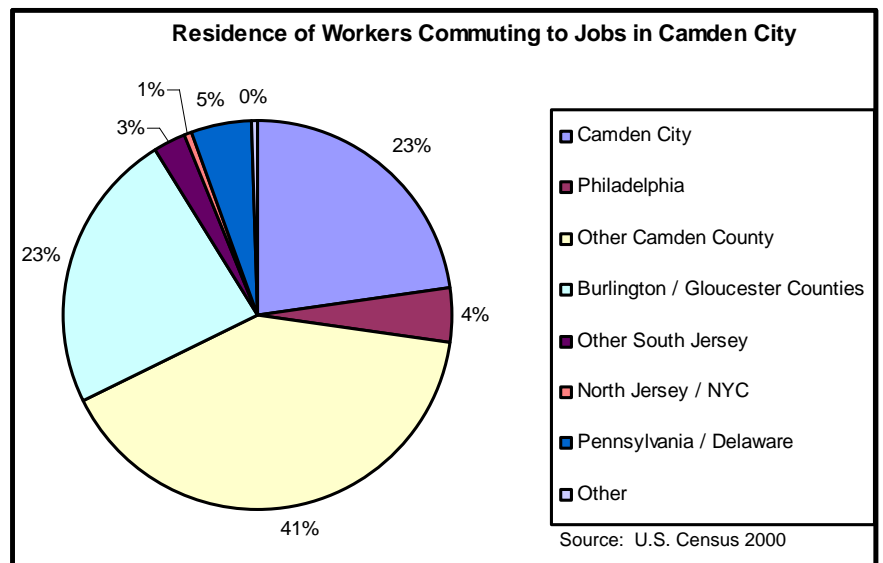
The Most Dangerous City rankings are based on year-old data. This graph based on data from the Camden County Prosecutor, shows a decrease in crime for the first 11 months of 2005. With this decrease, Camden will likely be ranked the 3rd or 4th Most Dangerous City when the next rankings are released in November 2006. More information can be found at <http://www.camconnect.org/MostDangerousCity.htm>

CAMConnect seeks a **Data Manager** to maintain its growing collection of health, housing, public safety, and government data. This position requires a Master's in Computer Science, Public Health, or a related degree, or a Bachelor's in a similar field plus 2 years of work experience. Significant database programming experience, including SQL, Access, Visual Basic, is required. Knowledge of SAS/SPSS, ArcGIS, Adobe Illustrator, Excel, important as well.

Initially this work will involve the design of a database that can synthesize data from multiple sources, standardize address formats, and run queries to generate a profile of health conditions in specific neighborhoods. Other tasks will include design and analysis of surveys, reports, and other data instruments.

For more information about CAMConnect, visit www.camconnect.org. Please e-mail resumes and cover letters to Derek Ziegler, at ziegler@camconnect.org.

CAMConnect Examines Employment Patterns



CAMConnect has prepared a report showing trends in employment in Camden City. This report can be accessed through the Members Section of the CAMConnect website. For more information on becoming a member, please see <http://www.camconnect.org/about/members.html>



CAMConnect News
January 2006

CAMConnect
E & R Building 2nd Floor
401 Haddon Avenue
Camden, NJ 08103



Become a **CAMConnect** Member



Becoming a Member Entitles You To:

- Quarterly issues of CAMConnect News
- Color copies of CAMConnect reports
- Access to Members Section of website with unique maps and data, frequently updated
- Priority for technical assistance
- \$500 Large organizations
- \$250 Departments
- \$100 Small organizations
- \$50 Patrons
- \$10 Camden City Resident

** Send check to become a member**
CAMConnect
E & R Building, 2nd Floor
401 Haddon Avenue
Camden, NJ 08103

www.camconnect.org