

2008–2009 Camden School Performance

Despite some gains in 8th grade, declining test scores, high absenteeism, and low graduation rates affect most students

Overview: The 2009 NJ School Report Card showed a significant drop in the number of Camden students scoring “proficient” on the High School Proficiency Assessment, particularly in **math**, where declines occurred across the board. Many 8th grade classes, however, achieved modest to sizable gains on both subject proficiency tests. Graduation rates were also substantially lower for District run **Camden High** (39.8%) and **Woodrow Wilson** high school (57.5%), than for Camden’s magnet schools.

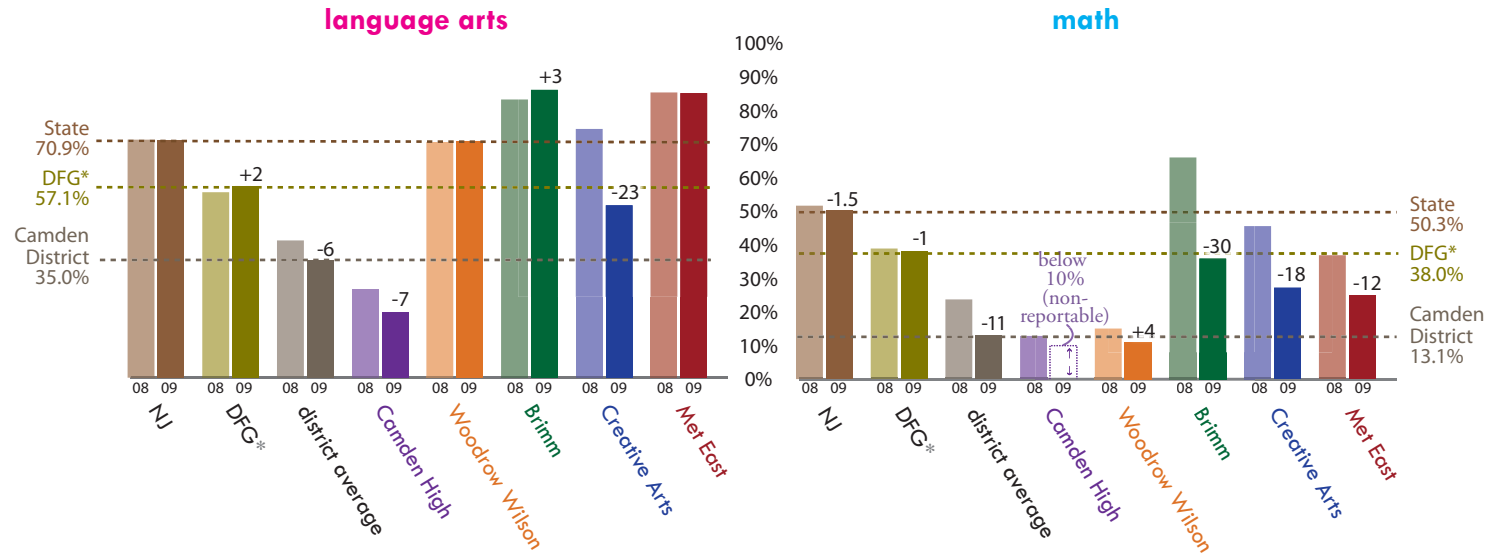
The **High School Performance Assessment** (HSPA) is given annually to 11th grade students in New Jersey’s as the primary requirement for graduation. Students must score “proficient” or better on both **math** and **language arts** to satisfy the requirement.

On the **language arts** section of HSPA, **Camden High School** and **Creative Arts** experienced decreases in 2009, with the latter newly joining Camden High below the **state average**. All other schools performed at or above the state level.

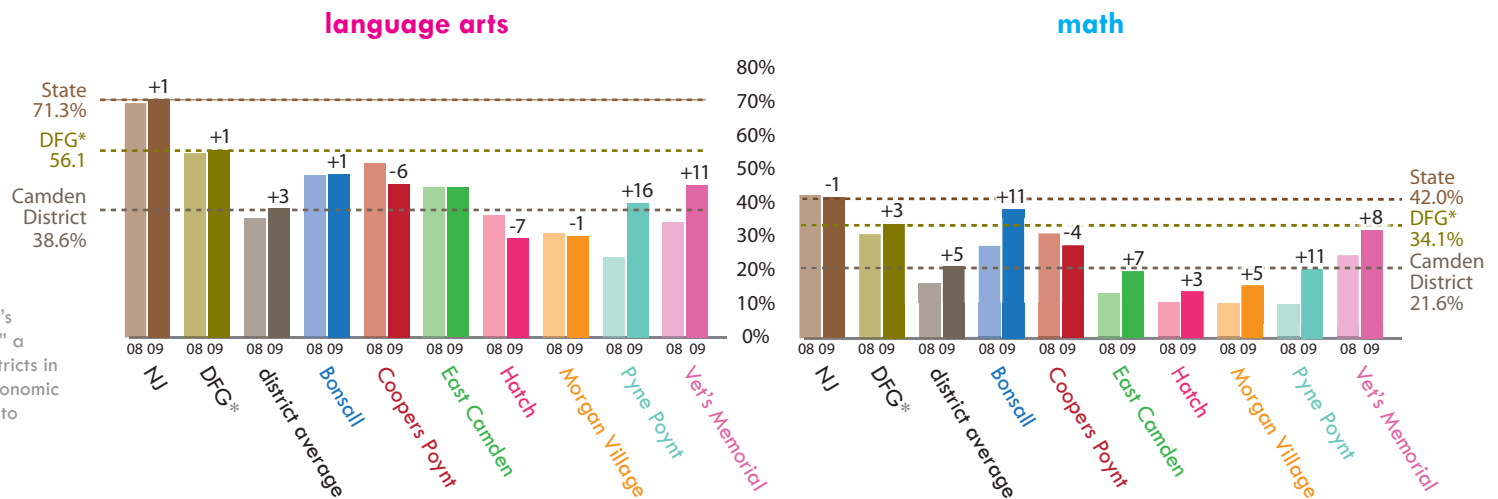
On the **math** section of HSPA, all high schools saw decreases in the percentage of students scoring “proficient” between 2008 and 2009. In 2009, all Camden-based high schools performed below the **state average** (with only 50.3% “proficient” at the state level).

The **New Jersey Assessment and Skills and Knowledge** (NJASK) is given to students across NJ in grades 3-8 to assess student performance. As a whole, the **Camden School District** saw moderate increases on both sections of the test in 2009. However, the district average for proficiency remains approximately half of the **state average**.

percent proficient on the High School Proficiency Assessment (HSPA)



percent proficient on the New Jersey Assessment of Skills and Knowledge (8th grade)



*DFG refers to the City's "District Factor Group," a collection of other districts in the State with socioeconomic characteristics similar to Camden's.

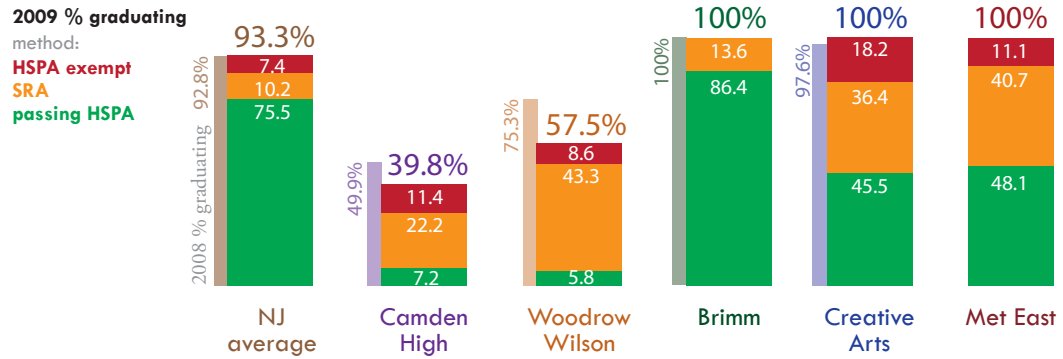
For more, visit:
CamConnect.org

April 2010 · E & R Building Suite 142, 401 Haddon Avenue, Camden NJ 08103 · (856) 968-9506

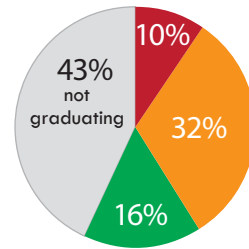
High School Graduation Rates

New Jersey permits three different paths to graduation. The primary method requires students to score **“proficient” on both sections of HSPA**. Students unable to do so or those who are deemed “not good test takers” may graduate via the **Special Review Assessment (SRA)**. This method has been the subject of continuous debate, with opponents viewing the test as a “backdoor” route to graduating and proponents arguing that it provides struggling students with an alternative that keeps students from dropping out. The third and final method of graduation, **exemption from HSPA**, is granted to students with disabilities.

Graduation rates dropped in 2009 for both **Camden High** and **Woodrow Wilson**. Both remain considerably below the **NJ average of 93%**. Overall rates, however, only tell part of the story. Whereas over 75% of students across New Jersey graduated by **passing HSPA**, only 7% of Camden High students, 6% of Woodrow Wilson students, and just 16% City-wide followed the same route. Meanwhile, **nearly a third of students at all Camden schools graduated via the SRA process**.



district graduation method

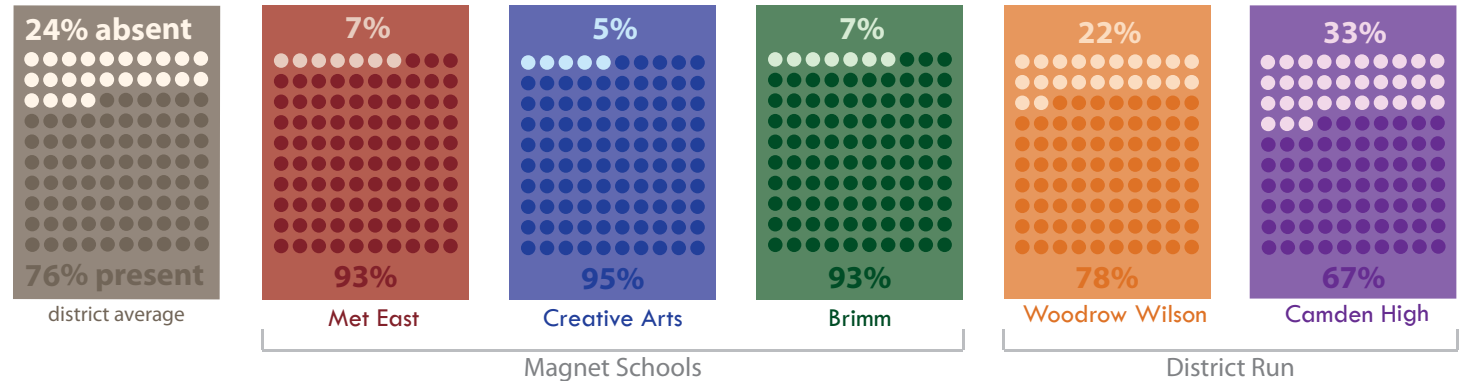


Camden High and **Woodrow Wilson** account for 77% of the districts's seniors but only 61% of its graduates in 2009. Three quarters of the graduates from the two schools did not pass the HSPA.

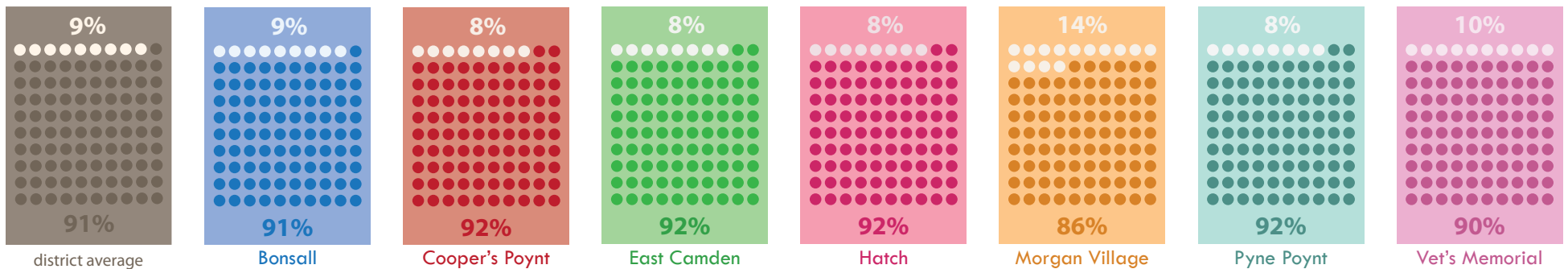
Absentee Rates

Absentee rates at *every* Camden-based high school and middle school, with the exception of **Creative Arts**, were above the state average of 5%. The grids to the right and below display absentee rates, with the darker circles representing the average percentage of students present on any given day and the lighter circles represent absent students. **Camden High (33%)** and **Woodrow Wilson (22%)** had absentee rates more than 4x and 6x the state average.

Camden high schools



Camden middle schools



School Environment and Resource Indicators



enrollment by grade

average classroom size by grade

student to faculty ratio

student to computer ratio

