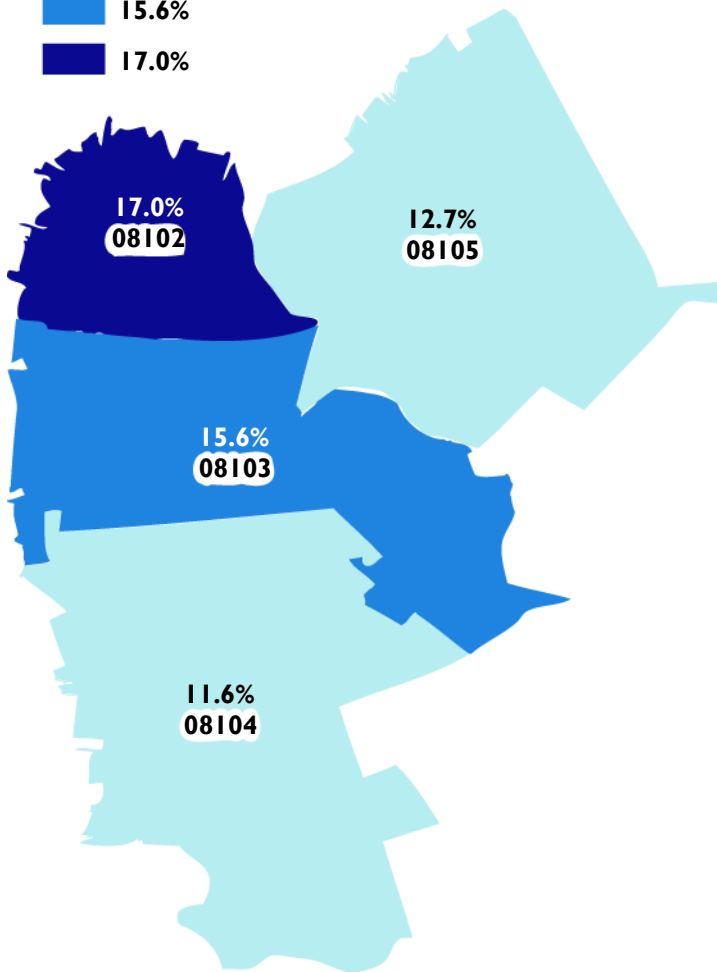
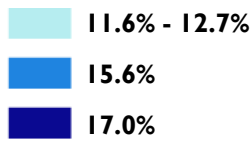


Diabetes in Camden

Data from a Camden City Comprehensive Health Database (July 2002 - June 2008)

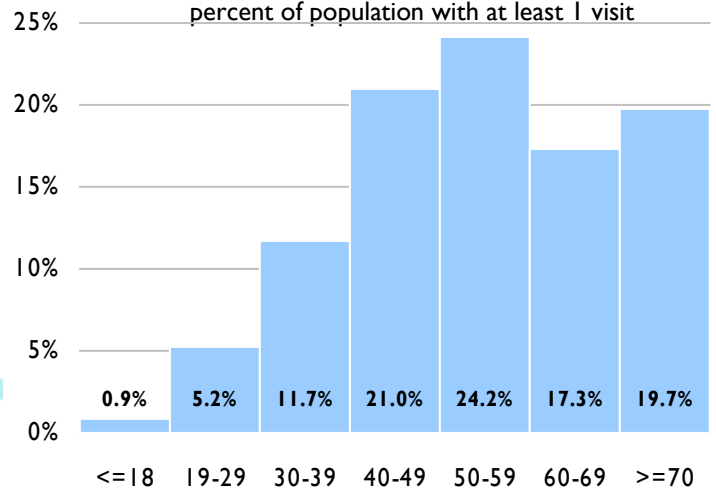
Diabetics by ZIP

percent of population with at least 1 visit

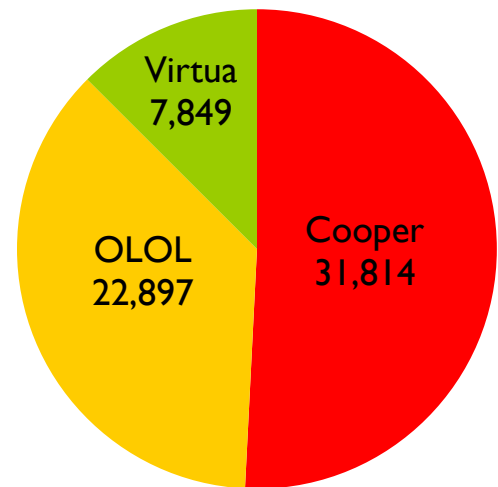


Diabetics by Age

percent of population with at least 1 visit



Visits by Diabetics by Hospital



Number of Visits	Total Visits	Total Patients	Charges	Receipts
1 to 10	22,075	5,270	\$674,344,336.42	\$92,597,330.57
11 to 20	16,134	1,126	\$431,920,873.45	\$55,148,779.38
Over 20	24,351	645	\$444,163,826.50	\$55,970,659.88
TOTAL	62,560	7,041	\$1,550,429,036.37	\$203,716,769.83

Diabetes in Camden

CAMConnect and the Camden Coalition of Health Care Providers are partnering to advance the health of Camden residents. These organizations have created a database that includes **every visit** to a Camden hospital between 2002 and mid-2008. This database includes:

- ☐ Billing and insurance information, including charges and receipts
- ☐ Visit information, including dates of admission and diagnosis codes
- ☐ Patient demographics, including name, age, and address

Through analysis of this database, it is possible to learn much about the health conditions and health behaviors of Camden residents. For instance, diabetic patients can be tracked longitudinally to determine hospital and emergency department (E.D.) utilization over a period of multiple years. This analysis presents some initial findings from investigation of diabetic patients.

The information in the Camden Health Database is treated with strict security, and individual patient-level information is not released.

	Visits	Patients	Visits / Patient
Diabetes	62,560	7,041	8.89
Overall	465,203	103,706	4.49

	E.D. Visits	Inpatient Visits	% Inpatient
Diabetes	39,946	22,610	57%
Overall	386,093	79,088	20%

	Collection Rate
Diabetes	13.14%
Overall	13.15%

Methods: Billing data was obtained separately from the three hospitals in Camden -- Cooper, Our Lady of Lourdes, and Virtua -- for the period from January 1, 2002 through June 30, 2008. Patient records were probabilistically linked using LinkageWiz software. Visits with a diagnosis of diabetes were identified. These visits were then analyzed in the context of the larger patient record. The 48,000 visits for diabetes include E.D. and inpatient visits for patients with a history of diabetes, but, not all visits have a specific diagnosis code directly attributable to diabetes.

For More Information

CAMConnect
 E & R Building, Suite 142
 401 Haddon Avenue
 Camden, NJ 08103
 Phone: (856) 968-9506
 singer@camconnect.org
 www.camconnect.org

Camden Coalition of Healthcare Providers
 E & R Building, Suite 142
 401 Haddon Avenue
 Camden, NJ 08103
 Phone: (856) 968-9507
 www.camdenhealth.org

The purpose of **CAMConnect** is to expand and democratize access to information for residents and organizations that live and work in the City of Camden.

The **Camden Coalition of Healthcare Providers** is a strategic initiative aimed at improving disease management in Camden City by increasing the capacity and accessibility of care at community-based primary care practices and the exploration of sustainable strategies of community health planning through dialogues and forging collaborative initiatives among key health stakeholders in the city.